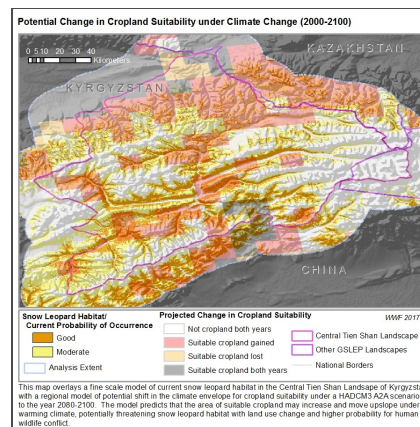


Potential Shift in Snow Leopard Climate Envelope

Shapefile



Tags

There are no tags for this item.

Summary

This dataset represents Potential Shift in the Suitable Climate Envelope for snow leopards, in and around the Central Tien Shan Landscape of Kyrgyzstan from the current time period to the 2080's.

Description

This map represents Potential Shift in the Suitable Climate Envelope for snow leopards, in and around the Central Tien Shan Landscape of Kyrgyzstan from the current time period to the 2080's. It was clipped from a rangewide model of snow leopard climate envelope, with methods described by Sindorf et al. 2014. Resolution is 10km. Suitable climate envelope infers that snow leopard habitat could exist, provided that other necessary conditions (suitable land cover, rugged areas, low human impact, etc) also exist there.

0=Unsuitable Climate Envelope (current and 2080's)

10 = Climate Envelope Loss (current to 2080's)

11 = Suitable Climate Envelope both years

There is no pixels in the category of climate envelope gain in this extent.

Credits

Sindorf, N., Forrest, J., and Arakwiye, B. 2014. Guardians of the Headwaters: Snow Leopards, Water Provision, and Climate Vulnerability. Washington, D.C.: WWF. www.thirdpolegeolab.org

and

Forrest, J., Bhatnagar, Y.V., Sindorf, N., Sharma, K. 2017. Landscape Analysis and Mapping of Snow Leopard Habitat in the Central Tien Shan Landscape, Kyrgyzstan. Ch. 4 of 6 in Landscape Mapping for Biodiversity Conservation, Water Resources Management, and Climate Adaptation at Six Sites in the Snow Leopard Range (eds. Forrest, J., Bartlett R., Sindorf, N.). World Wildlife Fund, Washington, DC. Available at: www.thirdpolegeolab.org.

Use limitations

There are no access and use limitations for this item.

Extent

West	75.032385	East	81.192814
North	43.462495	South	40.102260

Scale Range

Maximum (zoomed in)	1:5,000
Minimum (zoomed out)	1:150,000,000

You are currently using the Item Description metadata style. Change your metadata style in the Options dialog box to see additional metadata content.